

11150 **Epidote**

11151 **Epidote greenish extra**

Formula: $\text{Ca}_2(\text{Al,Fe}^{\text{III}})_3[\text{OH}(\text{SiO}_4)_3]$

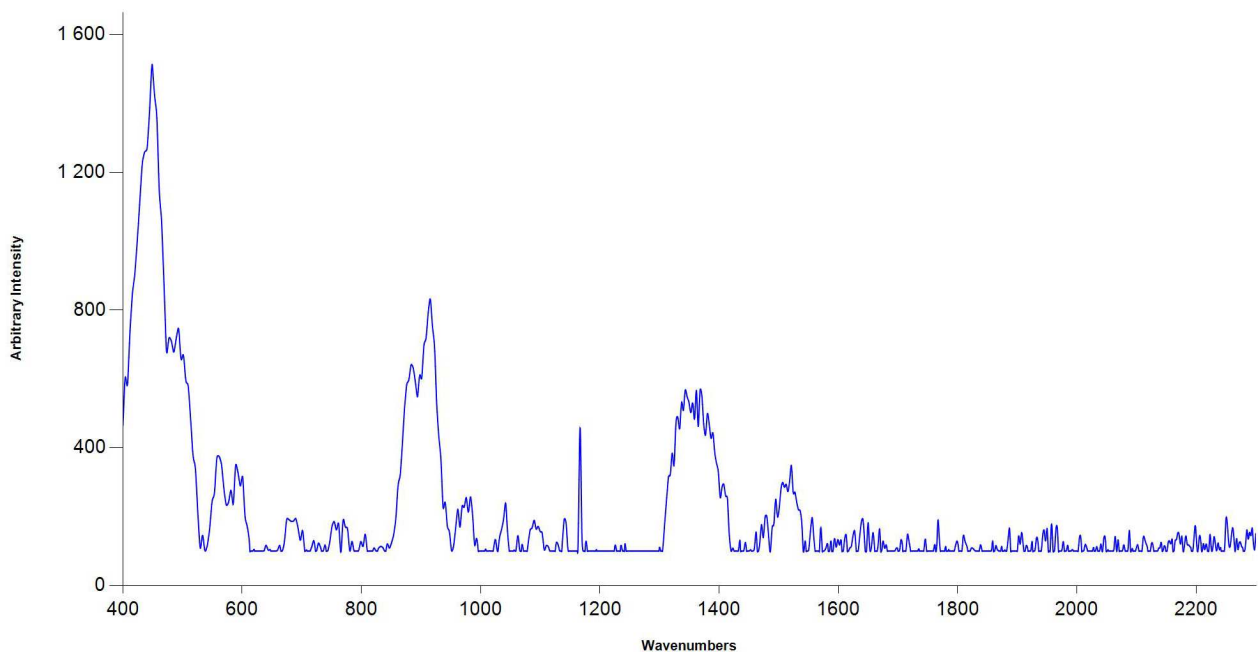
Epidote often is found in pistachio green, beautiful crystals. The calcium iron/aluminium silicate of complex composition is quite frequent.

By doing the difficult difference analysis between the different green earths normally only the Green Earth is found. Usually it is not examined exactly which kind of green earth is present in historical pictures.

The largest occurrences in Europe are in Piedmont, in Austria and Russia, also on Elba and in Tuscany. This yellowish green pistachio colored pigment might well be the dominating pigment in many yellowish green meadows of the early gothic.

Epidote 11151 is refined by an elaborate washing procedure. Very clear color.

Raman spectrum of 11151
(Source: MR PHSG, 2017)



— Sample Spectrum