

## 23950 Studio Red, Heliochrome Red

Pigment Red 3, C.I. 12120

Studio Red is a yellowish shade, which is very close to Perylene Red. The particle size of this pigment is relatively small, larger particles result in bluer shades. However, very blue-tinged grades are usually a product of chemical alteration.

This organic pigment was discovered at the beginning of this century, making it one of the oldest synthetically produced organic dyes. It is produced with the aid of an amine and ss-naphthol. The resulting molecule belongs to the group of monoazo pigments. Since studio red cannot exhibit particularly good fastness properties, it is increasingly being replaced by newer organic pigments.

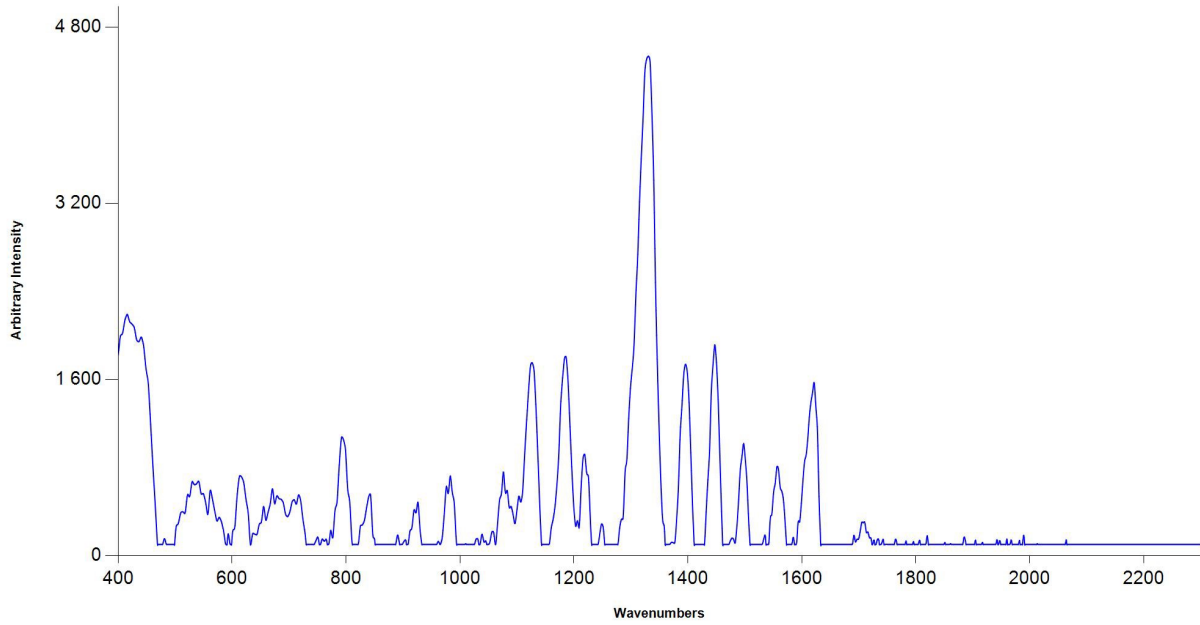
The following applies to the light fastness of studio red: 7 for the full shade, 5-6 for weak dilutions and 3 in stronger dilutions. On the other hand, resistance in acid, alkali and lime is very good (5). In solvents, this pigment bleeds; this effect is most pronounced in aromatics, mineral oils, ethyl alcohol and methyl ethyl ketone; in these solvents, the pigment has a fastness value of only 1. Studio Red is also not suitable for coloring plastics, since the pigment particles tend to migrate to the surface of the colored object. In linseed oil, the resistance with a value of 4 is not very good, but quite acceptable. In water, the pigment does not bleed. Studio red is heat stable up to 120°C.

Studio red is mainly used in the manufacture of paints and printing inks. In the production of artists' colors, the limited fastness values of this pigment must not be forgotten. For dyeing paper, studio red is well suited.

### Certificate of Analysis

Test characteristic / method	Specification	Result
Color strength LA3 PV 2/10, Aufhellung	95 - 105	101 %
Delta H, LA3 PV 2/10, lightening	- 0,50 - + 0,50	0,39 CIELAB
Delta C, LA3 PV 2/10, lightening	- 0,80 - + 0,80	0,63 CIELAB
Delta L, LA3 PV 2/10, lightening		0,21 CIELAB
Delta A, LA3 PV 2/10, lightening		0,50 CIELAB
Delta B, LA3 PV 2/10, lightening		0,55 CIELAB
Delta E, LA3 PV 2/10, lightening		0,80 CIELAB
Helligkeit LA PV 2/10, fullt tone		Corresponds to standard
pH-Wert PV 1/9	5,50 – 8,5	6,2
Specific conductivity PV 1/10	0,00 – 0,50	0,06 mS/cm
Volatile matter PV 1/7	0,00 – 1,00	0,30 %
Sieve residued Lsm. –E. PV 1/4		1 better

Raman-Spektrum von 23950:



— Sample Spectrum